

Committed to nurturing qualified, professional nurses for the people of Okinawa



Okinawa Prefectural College of Nursing

2011 College Guidance Digest Version



Located in the southernmost part of Japan, Okinawa encompasses nearly 40 inhabited islands, both large and small, across 1,000 kilometers of ocean east-west and 400 kilometers north-south. The mission of Okinawa Prefectural College of Nursing (OPNC) is to train competent nurses who can provide support to these island people, so that those living even in the most remote areas can maintain, improve, and recover their health.

OPCN opened its doors in 1999 with the aim of training nursing professionals in Okinawa and has produced 696 graduates to date. We are committed to advancing our health care education, which is unique in this area, in service of the citizens of Okinawa and to nurture professional nurses with a global mind-set and practical problem-solving skills.

Okinawa Prefectural Collage of Nursing *Hazuko Maeda*

We welcome prospective students who....

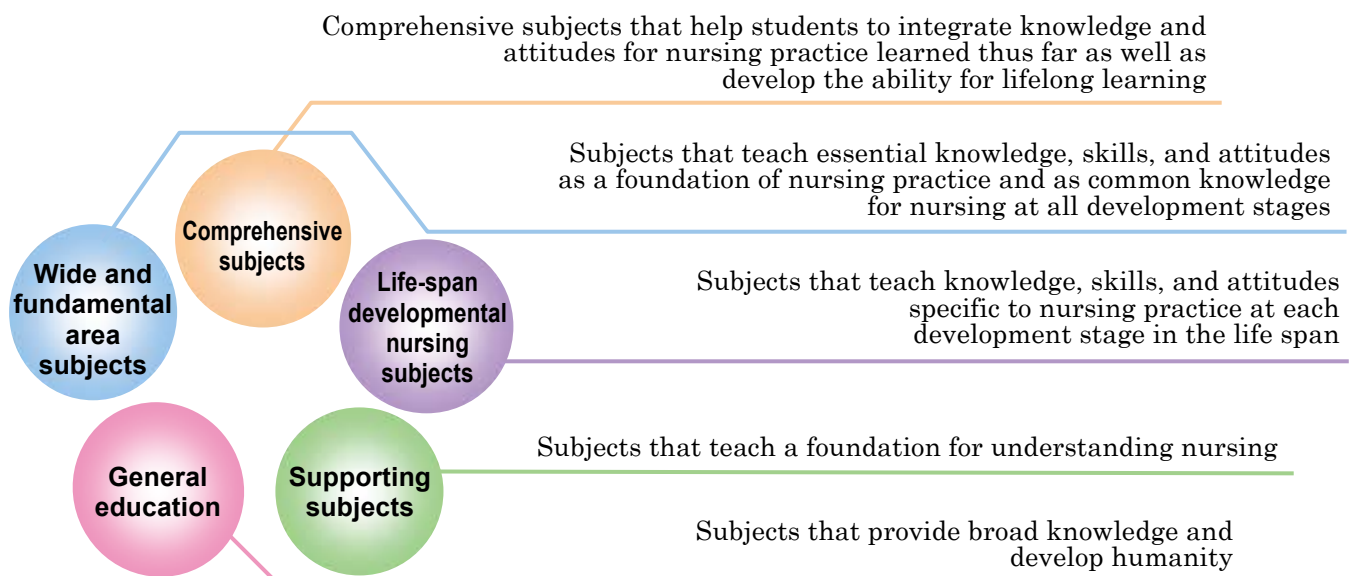
- have great interest in life and health, and who are passionate about contributing to society
- aspire to learn about a wide range of disciplines
- are interested in health care and nursing, including health care for those living on islands and in remote areas
- are interested in different cultures and are willing to take an international perspective to learning
- are committed to their studies and abide by our educational policy and regulations

School of Nursing

Special Features of the School of Nursing

- Nurses develop a knowledge of Okinawa's unique and special culture
- All graduates acquire qualifications of candidacy for registered nurse and public health nurse
- The admitting system is operated under recommendation of the head of municipalities, to encourage more nurses to practice on the islands
- Entrance fees are reduced for students from Okinawa Prefecture

School of Nursing Curriculum (5 subject groups)



Licenses you can obtain

- Degree of Bachelor of Nursing
- Qualifications of candidacy for registered nurse and public health nurse
- Qualification of candidacy for nurse midwife for those students who take extra nursing classes
- Acquisition of school nurse second class license with credits for specified classes and with a public health nurse license
- Opportunity for graduate school education, to become an advanced class professional

National Exam Pass Rates

	OPCN	National average
R.N.	100%	91.8%
P.H.N.	97.4%	86.3%
N.M	90.0%	97.2%

FY2010

A good environment supporting education

- Consistent education from undergraduate through graduate level
- Diverse faculty support for learning in health and medicine
- Distant education system operating
- School Library adds new books, visual materials, magazines, and databases every year. It is also open in the evenings and on the weekends.



Library

Graduate School

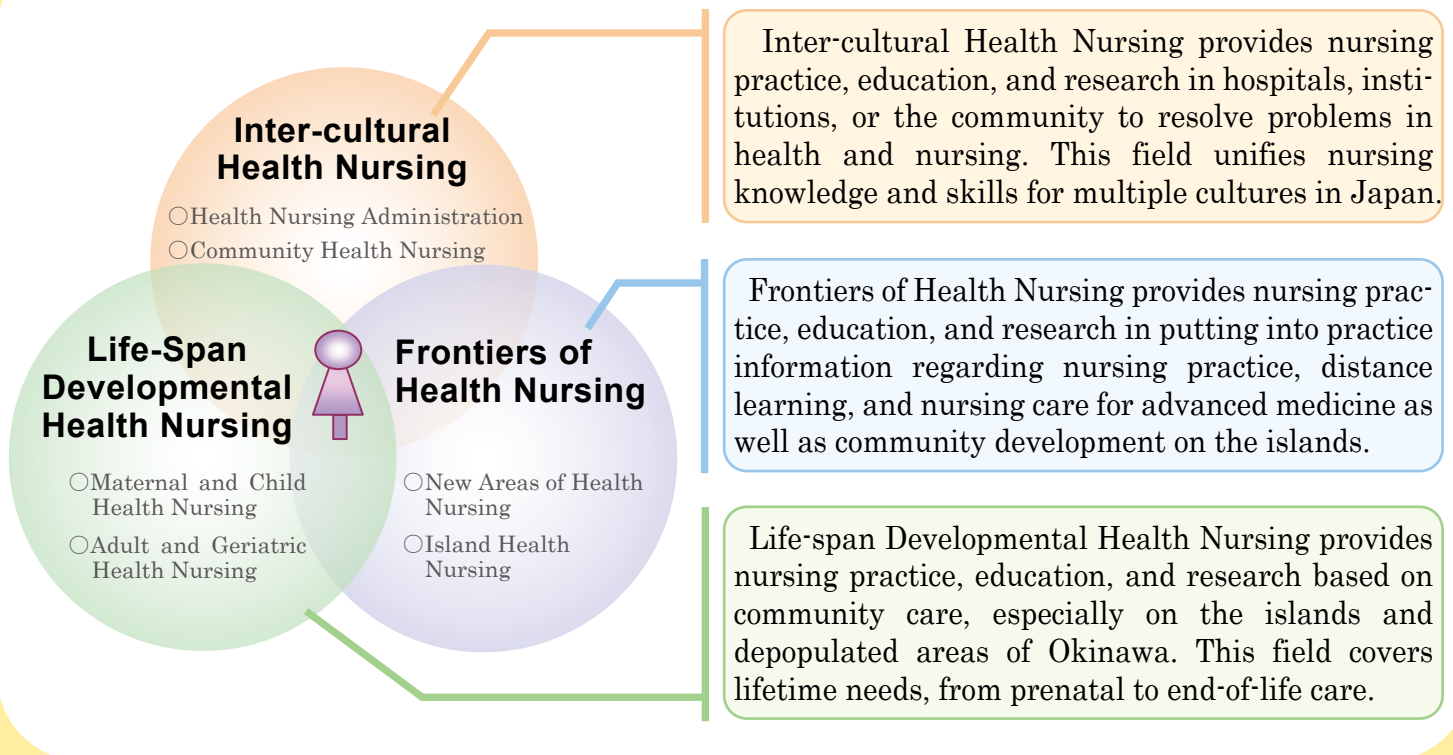
(Master's Course · Doctoral Course)



Special Features of the Graduate School

- Education is provided in “Island Health Nursing” because we are situated in the island prefecture of Okinawa
- Clinical nurse specialist education is provided in the fields of “Mental Health and Psychiatric Nursing”, “Chronic Nursing”, “Geriatric Nursing”, and “Cancer Nursing”
- Many students who are working full-time take classes at the Graduate School
- The Graduate School supports students to prepare for the admission examination

Graduate School Curriculum (3 fields, 6 areas)



Additional Nurse Midwife Course

Purpose of the Course

The purpose of this course is to resolve the midwife shortage in Okinawa. RN students study for one year to become nurse midwives who carry out regular deliveries and health administration. This course also contributes to Maternal and Child Health on the islands.

National Exam Pass Rate 94.7% FY2010

Course Curriculum

First Term

- Lecture
Fundamentals of Midwifery
- Practice in school
Midwifery diagnosis
Midwifery techniques
- Midwifery research

Second Term

- Practicum
Midwifery practicum
Women's health practicum*
Island environment practicum*
- Midwifery research
*optional subject

2011 Academic Calendar

April	Entrance Ceremony Spring Semester Classes Begin
May	College Opening Commemoration Day
June	13th OPCN Festival
July	Open Campus
August	Summer Recess Hawai'i Study Tour
September	Entrance Examination for OPCN Graduate School
October	Fall Semester Classes Begin
November	Entrance Examination for Special Selection (Nursing Department and Special Course of Midwifery)
December	Presentation of Graduation Thesis Winter Recess
January	National Examination
February	Entrance Examination for General Selection (Special Course of Midwifery) Entrance Examination for General Selection 1 (Nursing Department)
March	Entrance Examination for General Selection 2 (Nursing Department) Presentation of Dissertation by Graduate Students Graduation Ceremony and Completion Ceremony Spring Recess



Entrance Ceremony



Open Campus



Hawai'i Study Tour

Access

1. By taxi (Naha Airport to OPCN) approx. 15 min.
2. By monorail & bus
 Monorail (Naha Airport to Asahibashi) approx. 11 min
 Walk to Naha Bus terminal approx. 2 min
 Bus (Naha Bus terminal to Yogi Crossing or OPCN) approx. 15 min



Okinawa Prefectural College of Nursing

Yogi 1-24-1, Naha City, Okinawa Pref. 902-0076, Japan
 TEL(098)833-8800 FAX(098)833-5133

<http://www.okinawa-nurs.ac.jp>

Okinawa Prefectural College of Nursing

search